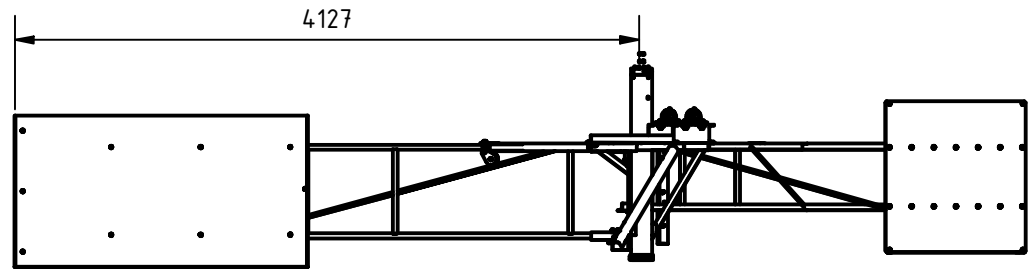
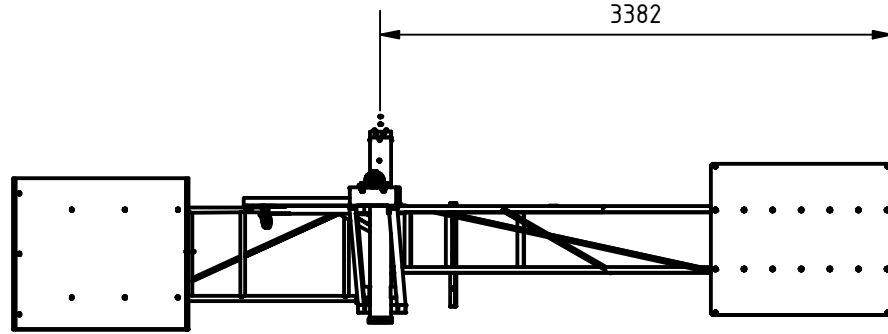
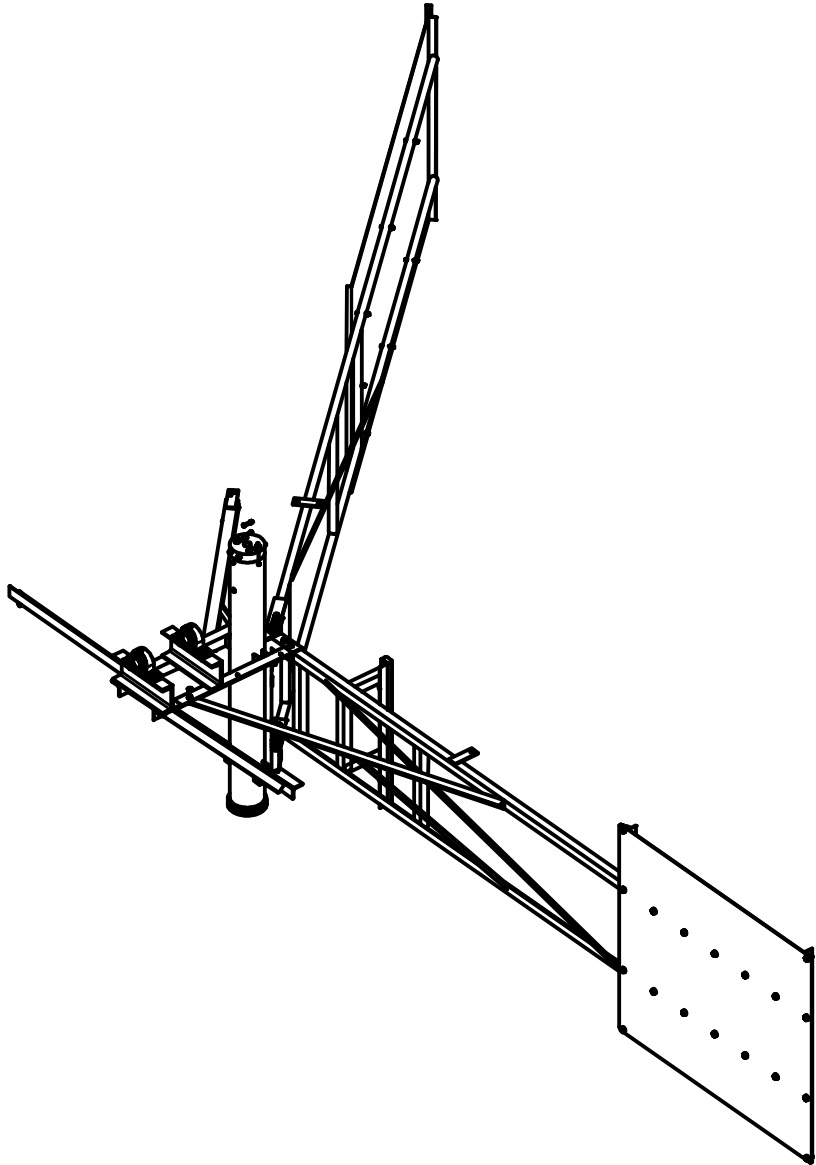


3. Control-Unit

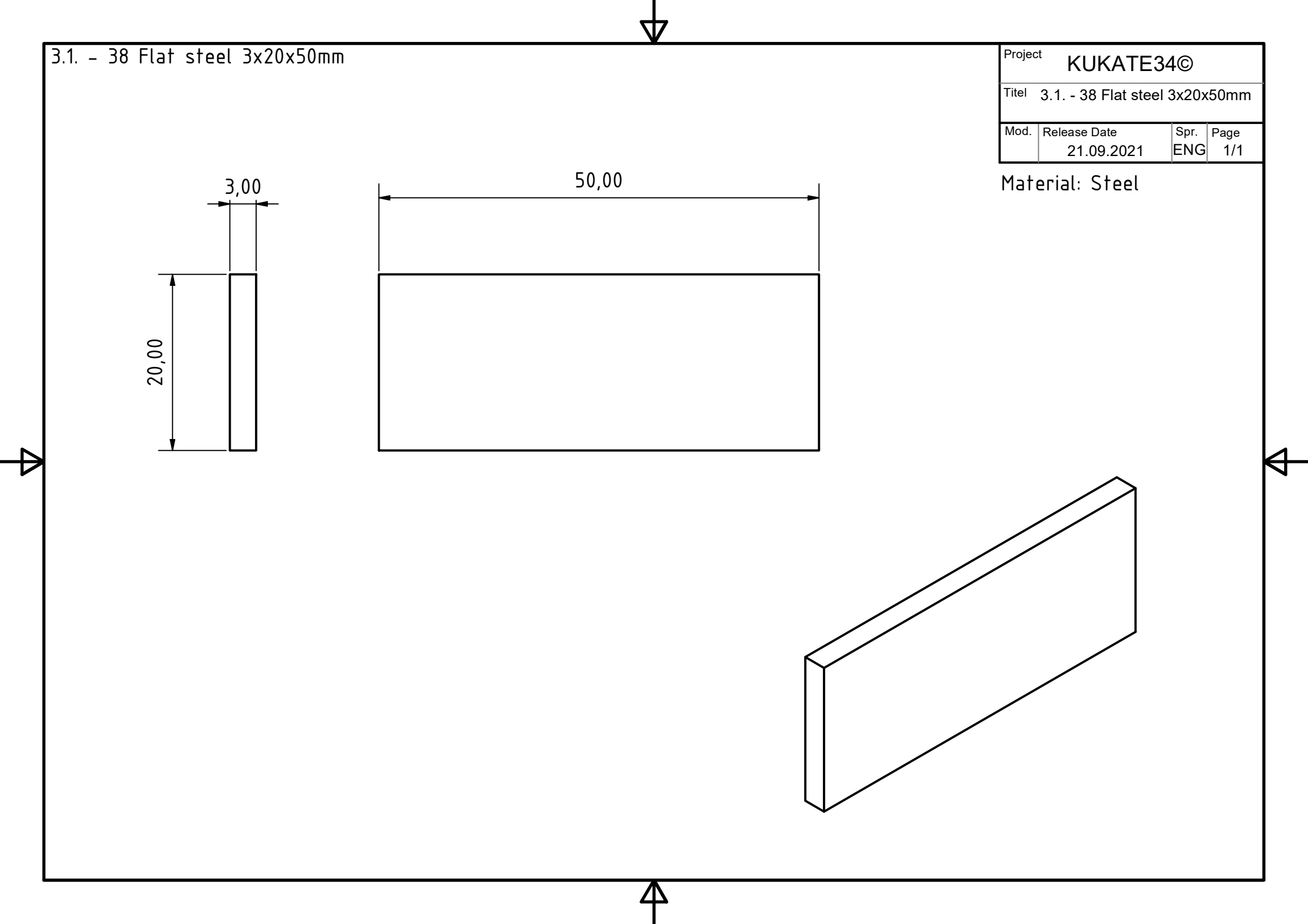
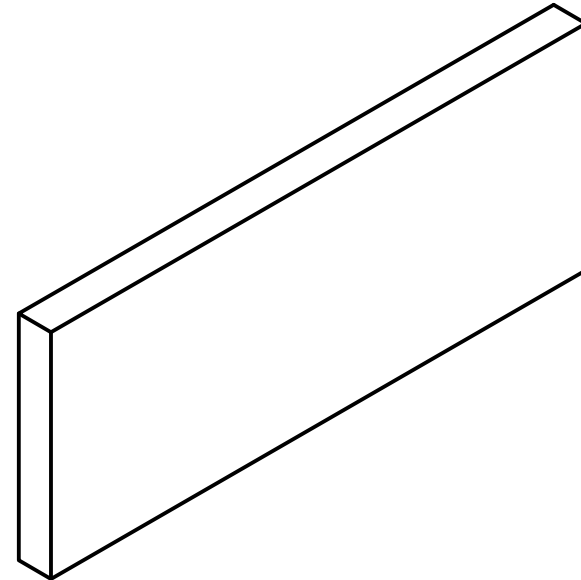
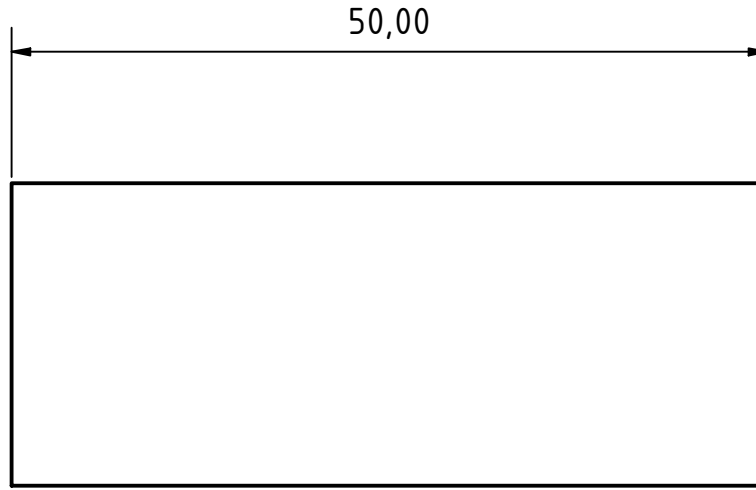
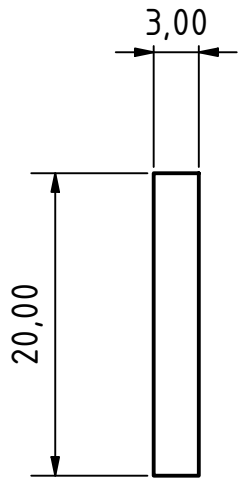
Project	KUKATE34©		
Titel	3. Control-Unit		
Mod.	Release Date	Spr.	Page
	01.11.2021	ENG	1/3



3.1. - 38 Flat steel 3x20x50mm

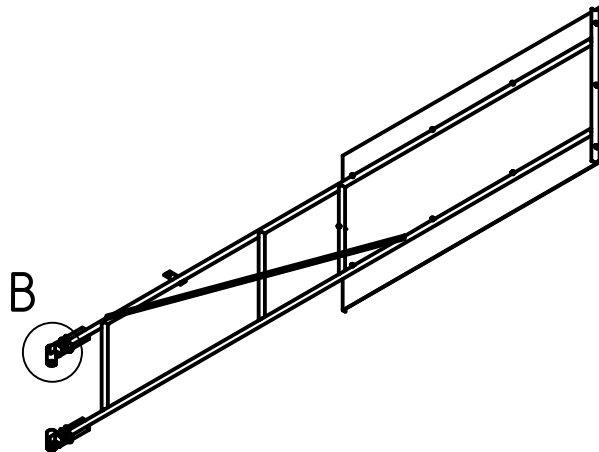
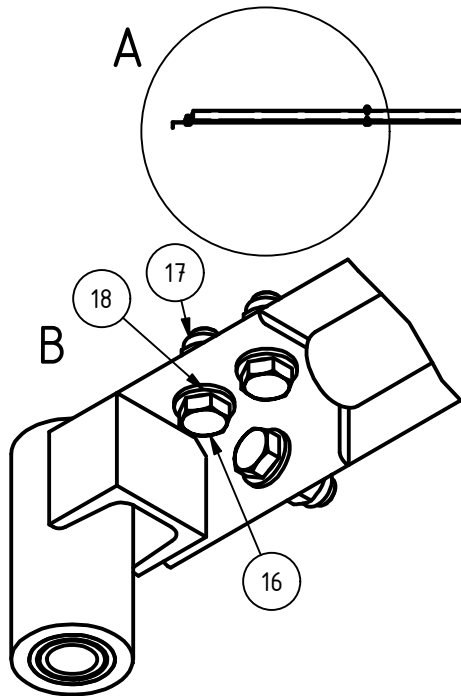
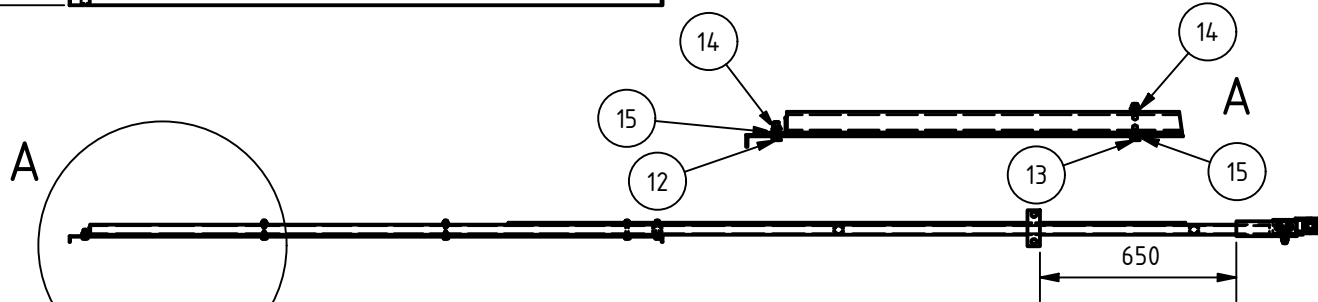
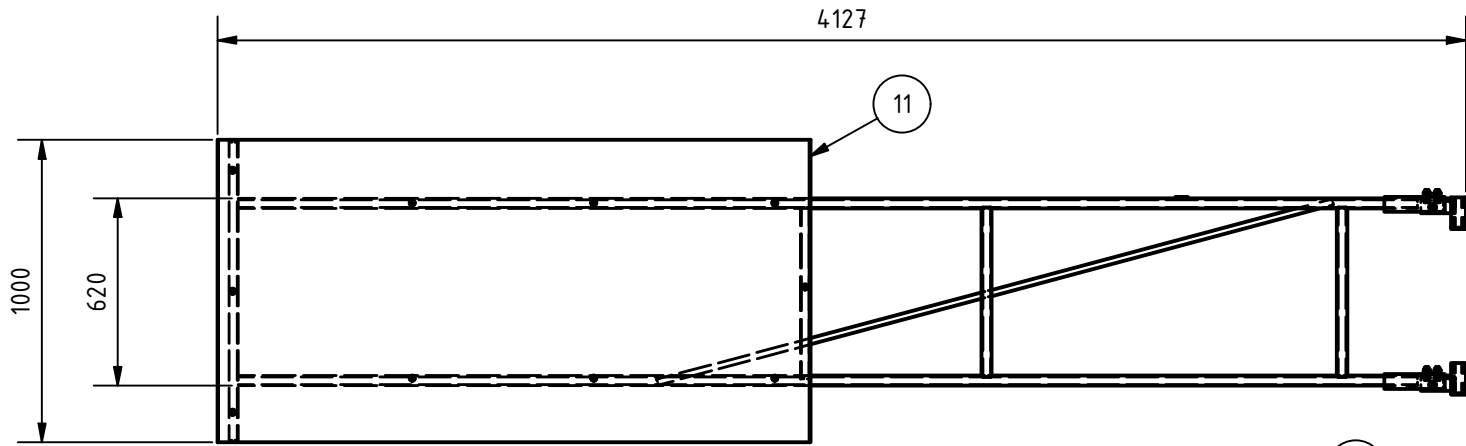
Project	KUKATE34©		
Titel	3.1. - 38 Flat steel 3x20x50mm		
Mod.	Release Date	Spr.	Page
	21.09.2021	ENG	1/1

Material: Steel



3.1 Control vane

Project		KUKATE34©	
Titel		3.1 Control vane	
Mod.	Release Date	Spr.	Page
	20.11.2021	ENG	1/3

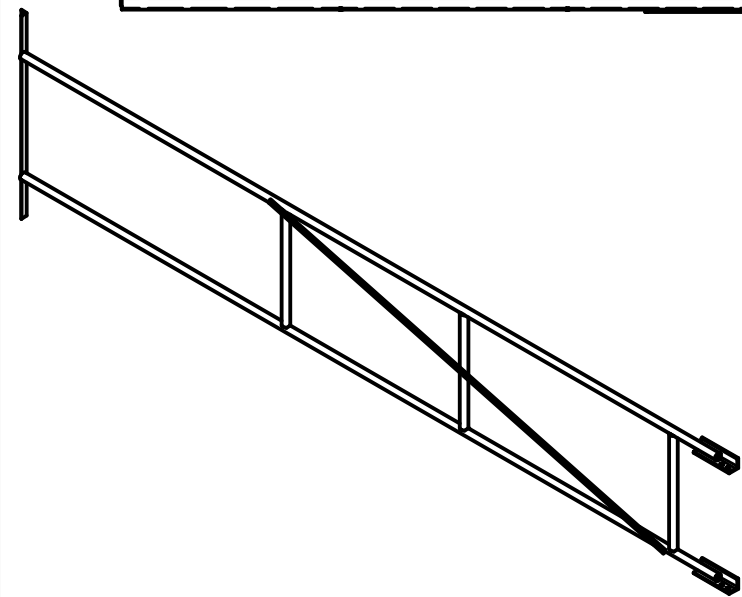
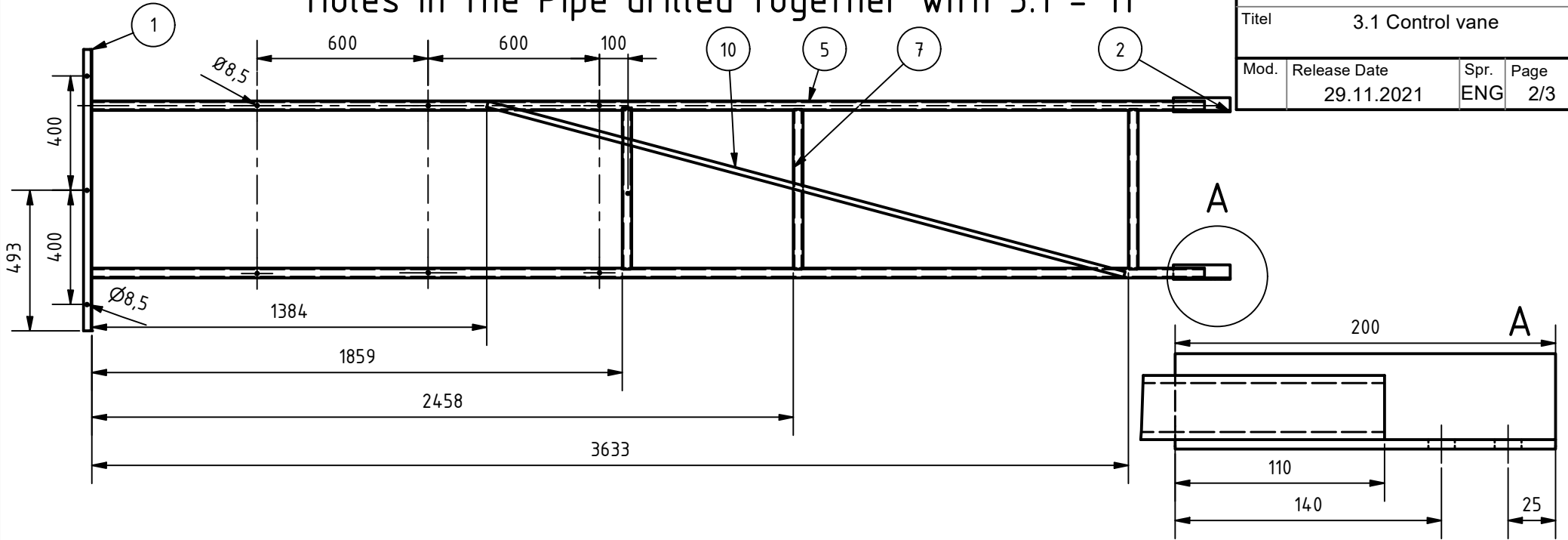


PARTS LIST				
Chap.	Pos.	Name	Standard	Qty
3.1-	11	Sheet	EN 10051 - 2000x1000x1	1
3.1-	12	Hexagon head screw	ISO 4017 - M10x35-8.8	6
3.1-	13	Hexagon head screw	ISO 4017 - M10x65-8.8	3
3.1-	14	Hex nut with torque part	ISO 7040 - M10-8.8	9
3.1-	15	Washer	ISO 7089 - 10	15
3.1-	16	Hexagon head screw	ISO 4017 - M12x35-8.8	6
3.1-	17	Hex nut with torque part	ISO 7040 - M12-8.8	6
3.1-	18	Washer	ISO 7091 - 12	12
3.1-	20	Blind rivet	DIN 7337 - A4 x 6	16
3.1-	21	Blind rivet	DIN 7337 - A4 x 8	8
3.1-	29	Flat steel	DIN EN 10058 - 20x3x1420	1
3.1-	37	Flat steel	DIN EN 10058 - 20x3x120	1

3.1 Control vane

Holes in the Pipe drilled together with 3.1 - 11

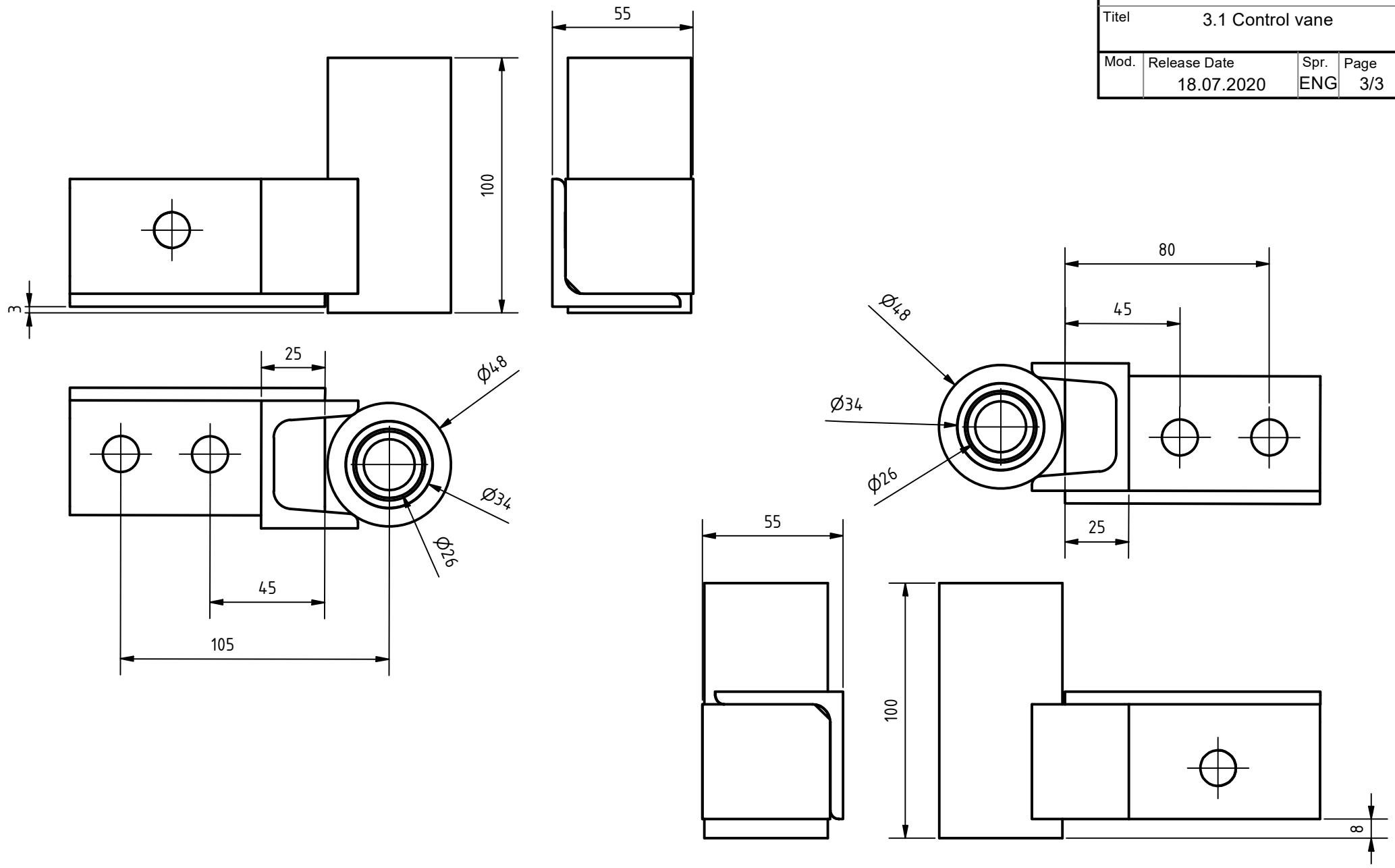
Project		KUKATE34©	
Titel		3.1 Control vane	
Mod.	Release Date	Spr.	Page
	29.11.2021	ENG	2/3



PARTS LIST				
Chap.	Pos.	Name	Standard	Qty
3.1-	1	L-Profile	DIN EN 10056-1 - L30x30x3-985	1
3.1-	2	L-Profile	DIN EN 10056-1 - L50x50x5-200	2
3.1-	5	Pipe	DIN2448 - 33,7x4-3900	2
3.1-	6	Pipe	DIN2448 - 33,7x4-586	3
3.1-	10	Flat steel	DIN 174 - 20 x 3-2300	1

3.1 Control vane

Project		KUKATE34©	
Titel		3.1 Control vane	
Mod.	Release Date	Spr.	Page
	18.07.2020	ENG	3/3



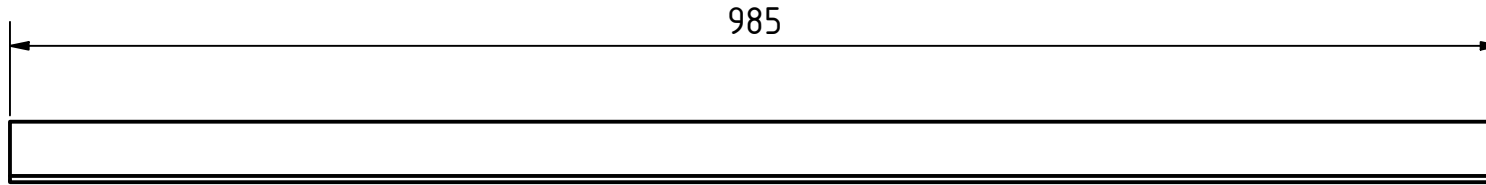
3.1-1 L-Profile 40x40x4x985

Material: Steel

Project KUKATE34©

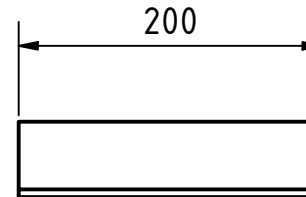
Titel 3.1 L-Profile

Mod.	Release Date	Spr.	Page
	18.07.2020	ENG	1/1



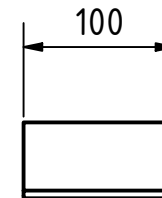
3.1-2 L-Profile 50x50x5x200

Material: Steel



3.1-2 L-Profile 50x50x5x100

Material: Steel



3.1-5 Pipe 4,24x3,6x3900

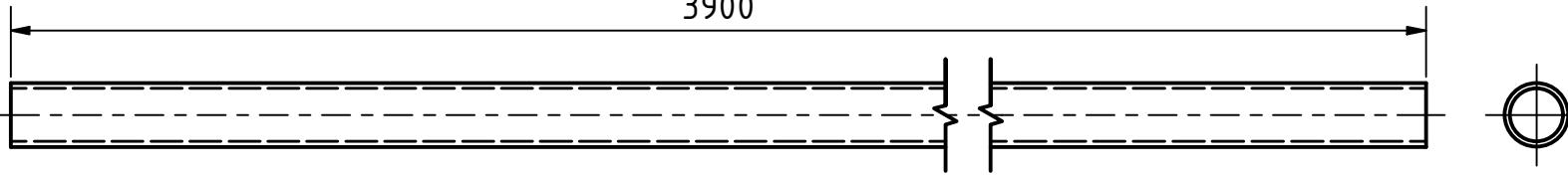
Material: Steel

Project KUKATE34©

Titel 3.1 Pipes

Mod.	Release Date	Spr.	Page
	18.07.2020	ENG	1/1

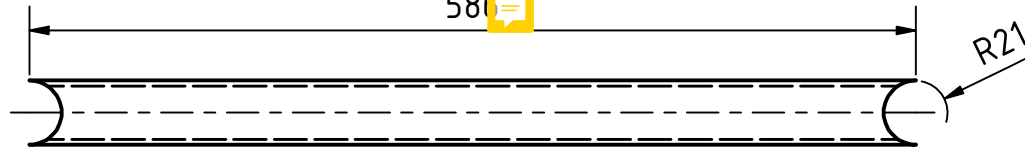
3900



3.1-6 Pipe 4,24x3,6x586

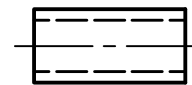
Material: Steel

586



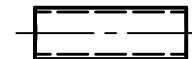
3.1-7 Pipe 48,3x7,1x100

Material: Steel



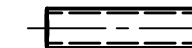
3.1-8 Pipe 28x3,1x100

Material: Brass



3.1-9 Pipe 21x2,5x100

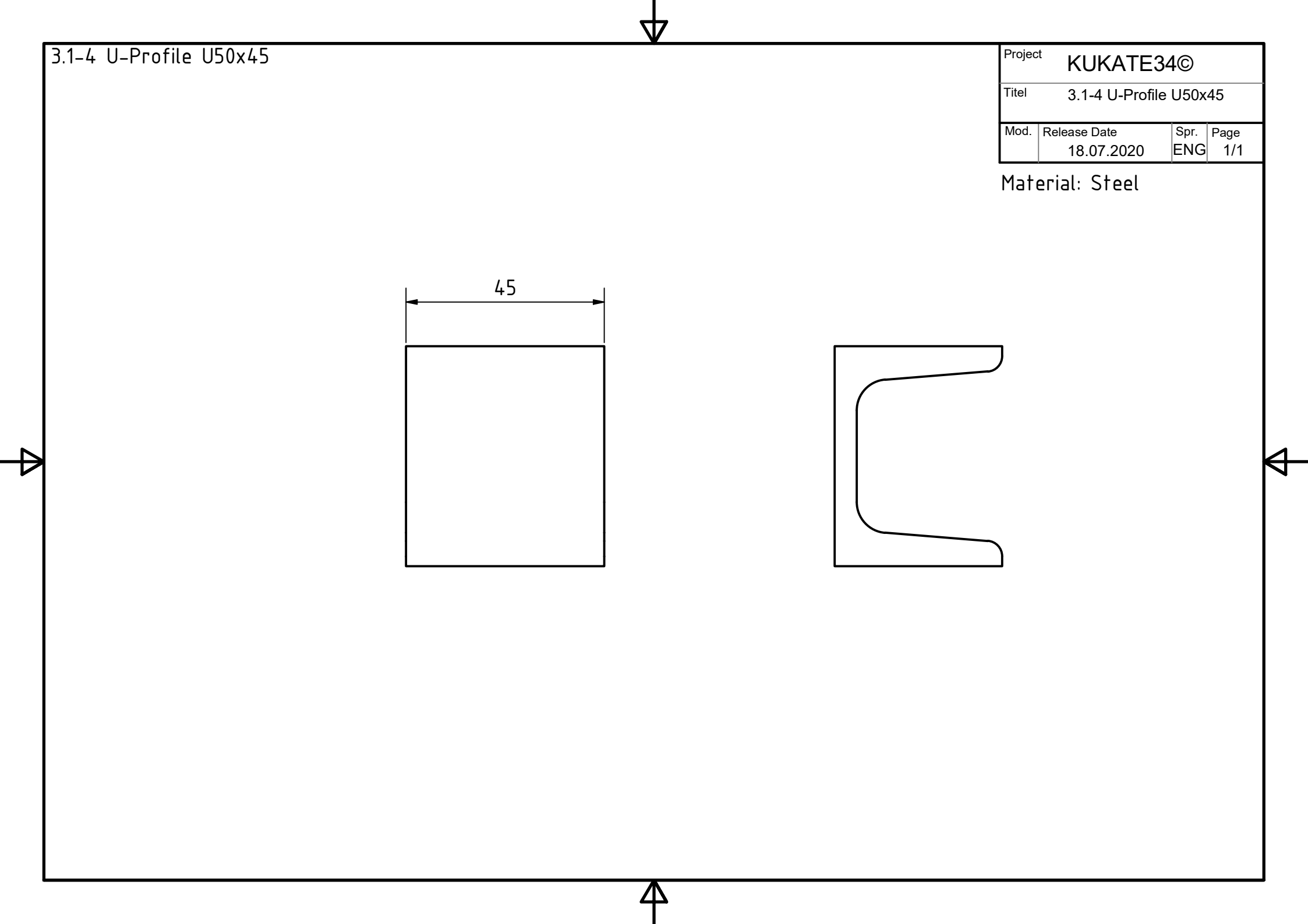
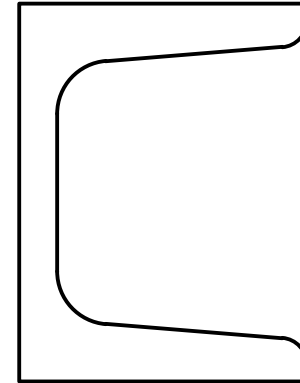
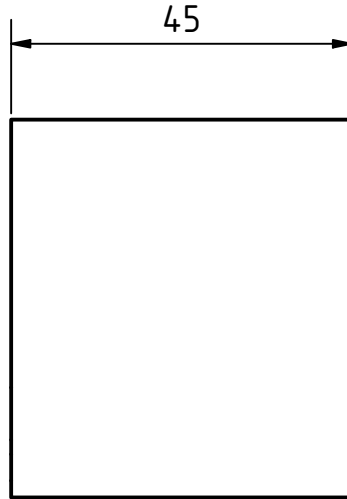
Material: Brass



3.1-4 U-Profile U50x45

Project	KUKATE34©		
Titel	3.1-4 U-Profile U50x45		
Mod.	Release Date	Spr.	Page
	18.07.2020	ENG	1/1

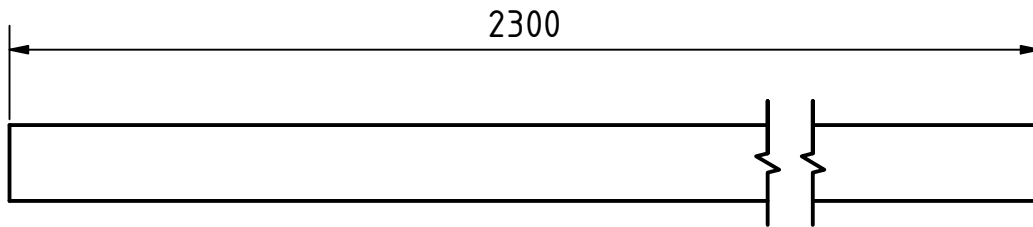
Material: Steel



3.1-10 Flat steel 20x3x2300

Project	KUKATE34©		
Titel	3.1-10 Flat steel 20x3x2300		
Mod.	Release Date	Spr.	Page
	18.07.2020	ENG	1/1

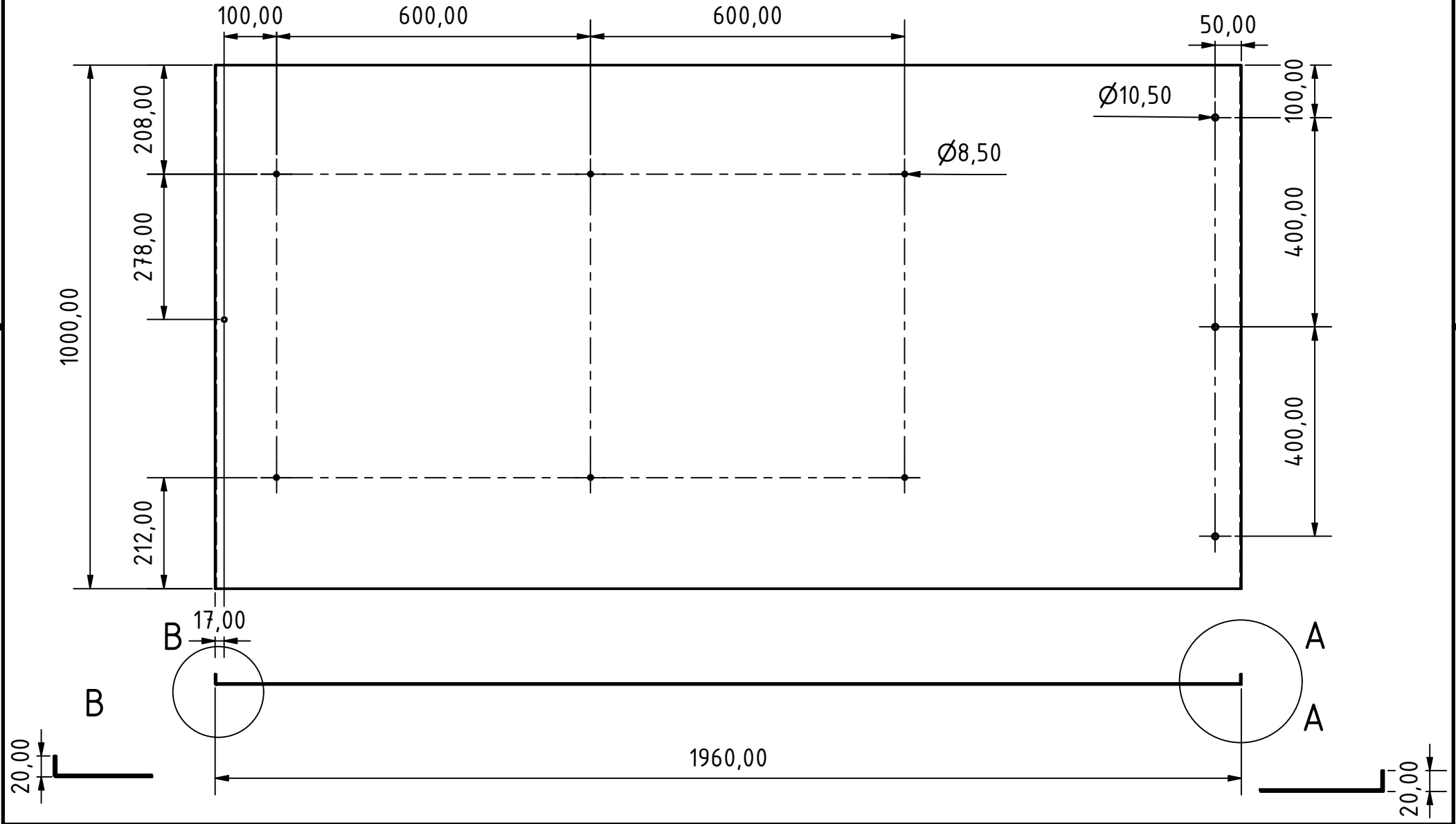
Material: Steel



Project		KUKATE34©	
Titel		3.1-11 Sheet 2000x1000x2	
Mod.	Release Date	Spr.	Page
	26.11.2021	ENG	1/1

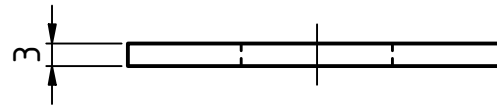
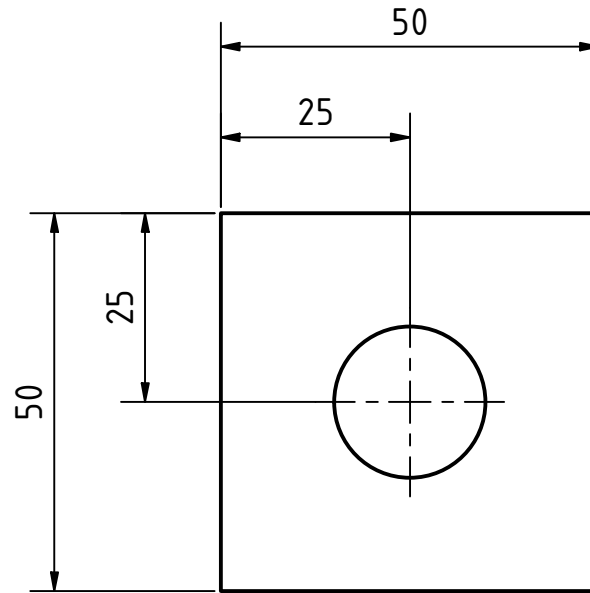
Ø8.5 holes drilled together with 3.1 control vane

Material: EN AW 5754



Project	KUKATE34©		
Titel	3.1-24 Sheet 50x50x3		
Mod.	Release Date	Spr.	Page
	18.07.2020	ENG	1/1

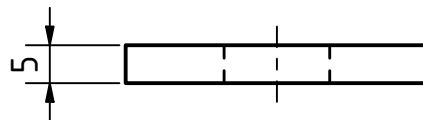
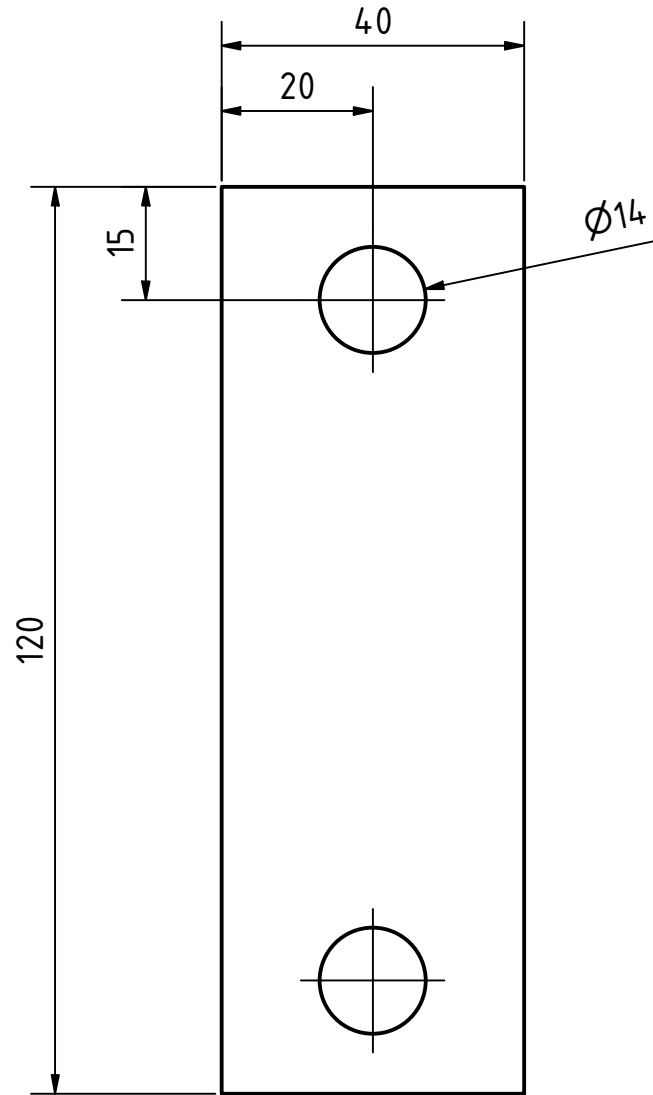
Material: Brass



3.1-37 Flat steel 20x3x120

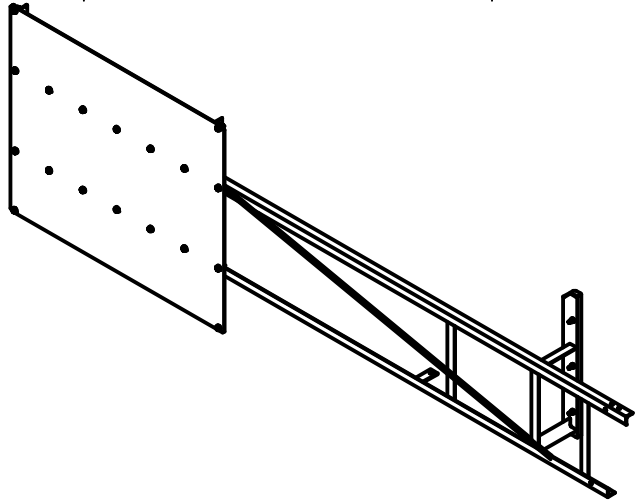
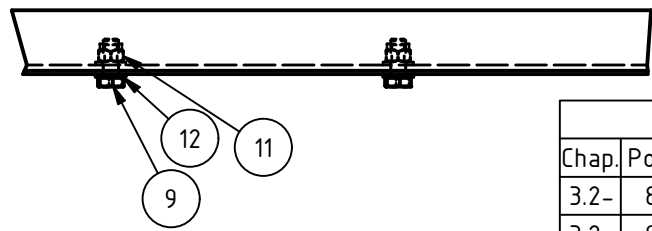
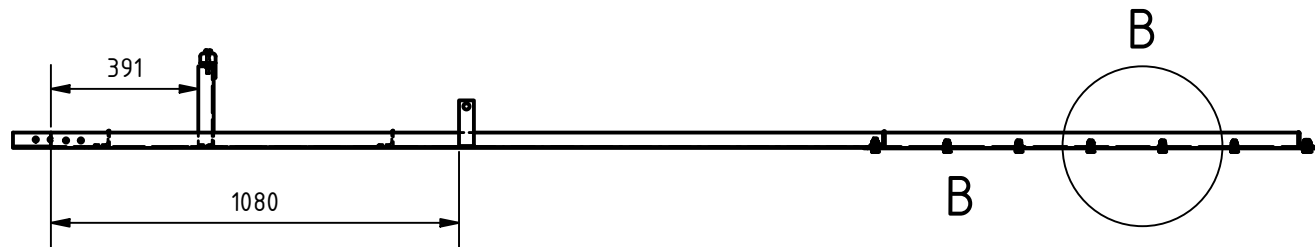
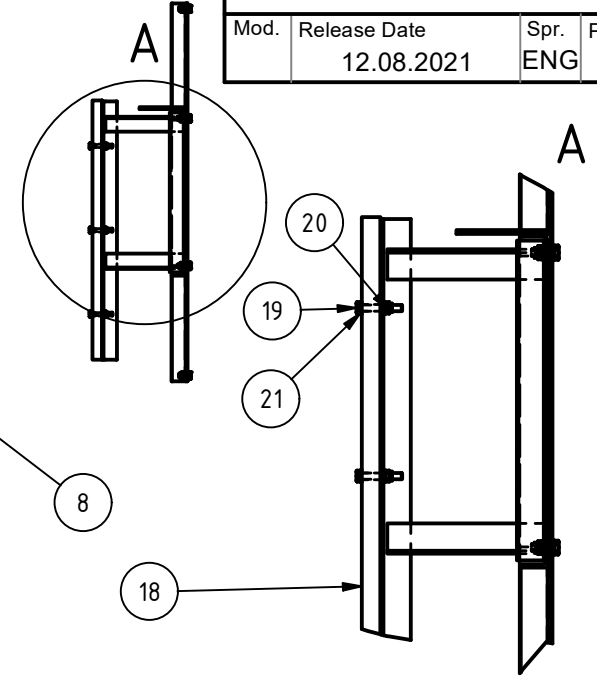
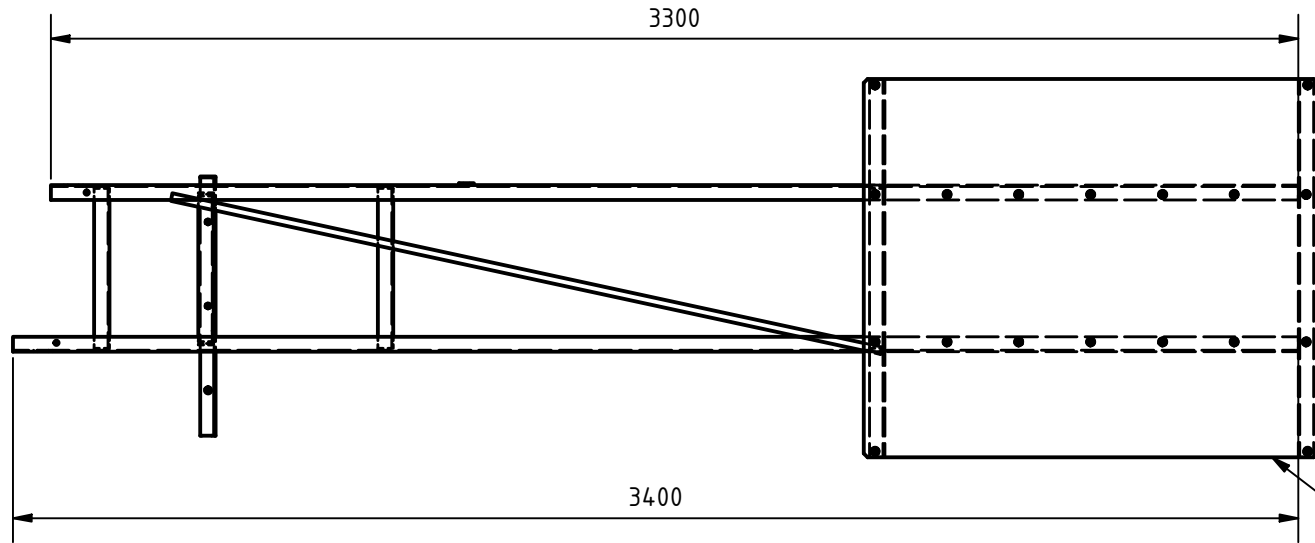
Project	KUKATE34©		
Titel	3.1-37 Flat steel 20x3x120		
Mod.	Release Date	Spr.	Page
	18.07.2020	ENG	1/1

Material: Steel



3.2 Cross vane

Project		KUKATE34©	
Titel		3.2 Cross vane	
Mod.	Release Date	Spr.	Page
	12.08.2021	ENG	1/2

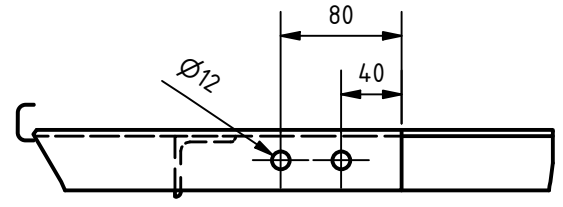
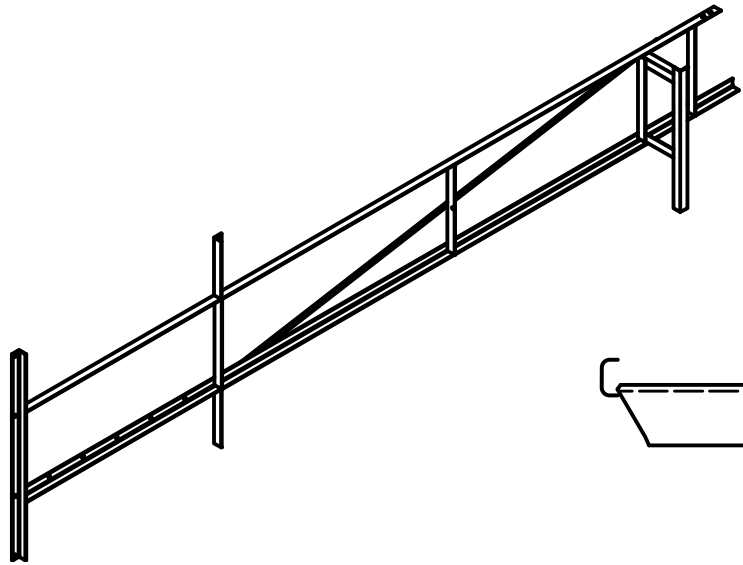
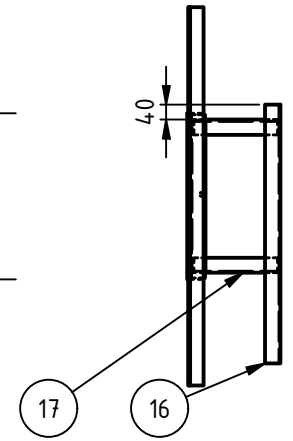
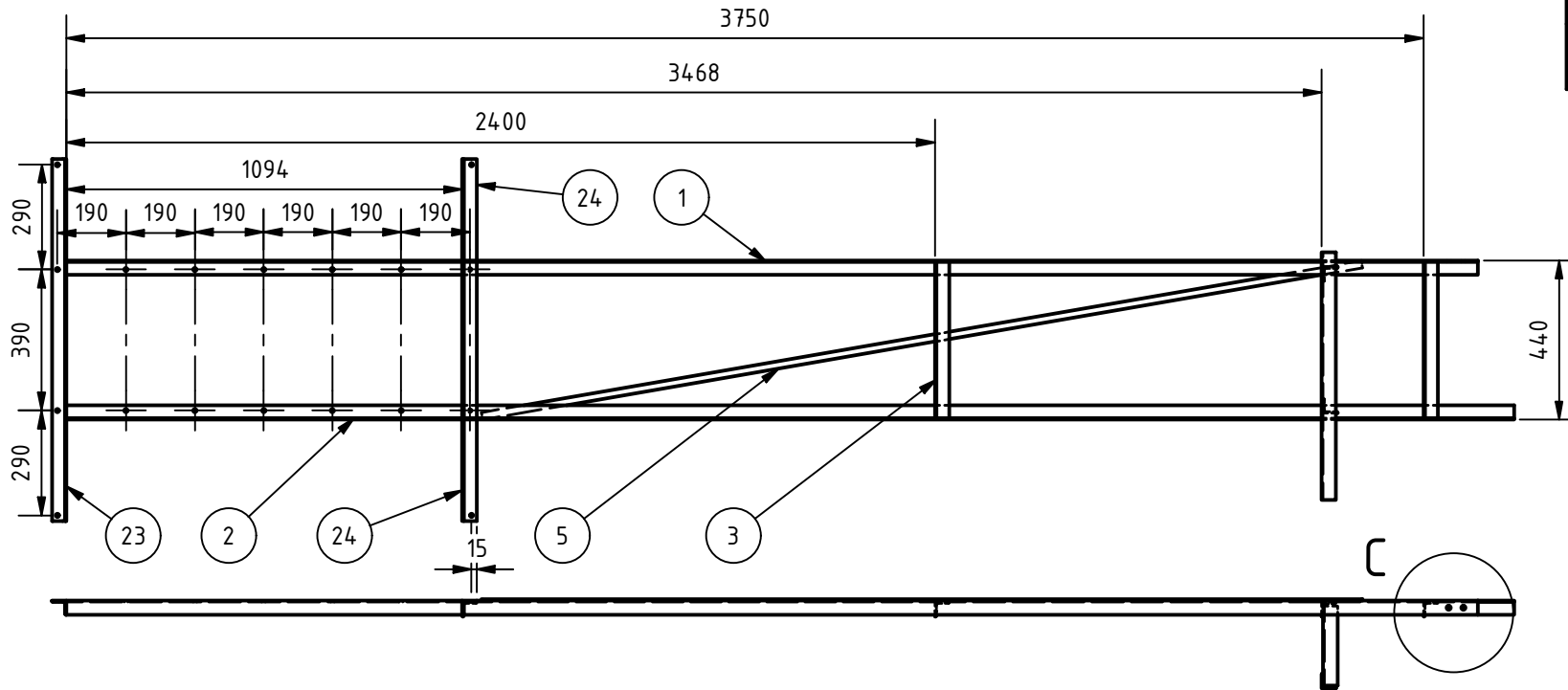


PARTS LIST				
Chap.	Pos.	Name	Standard	Qty
3.2-	8	Sheet	EN 10051 - 1200x1000	1
3.2-	9	Hexagon head screw	ISO 4017 - M10x20-8.8	18
3.2-	11	Hex nut with torque part	ISO 4032 - M10-8.8	18
3.2-	12	Washer	ISO 7089 - 10	36
3.2-	18	Wood		1
3.2-	19	Hexagon head screw	ISO 4017 - M8x50-8.8	3
3.2-	20	Hex nut with torque part	ISO 7040 - M8-8.8	3
3.2-	21	Washer	ISO 7089 - 8	6
3.2-	22	Flat steel	DIN EN 10058 - 120x40x5	1

3.2 Cross vane

All holes for the sheet drilled together with 3.2 - 8

Project		KUKATE34©	
Titel		3.2 Cross vane	
Mod.	Release Date	Spr.	Page
	02.03.2021	ENG	2/2



PARTS LIST				
Kap.	Pos.	Bezeichnung	Norm	Anz.
3.2-	1	L-Profil	DIN EN 10056-1 - L40x40x4-3900	1
3.2-	2	L-Profil	DIN EN 10056-1 - L40x40x4-4000	1
3.2-	3	L-Profil	DIN EN 10056-1 - L40x40x4-432	3
3.2-	5	Flat steel	DIN 174 - 20x3-2465	1
3.2-	16	L-Profil	DIN EN 10056-1 - L40x40x4-685	1
3.2-	17	L-Profil	DIN EN 10056-1 - L40x40x4-220	2
3.2-	23	L-Profil	DIN EN 10056-1 - L40x40x4-1000	1
3.2-	24	L-Profil	DIN EN 10056-1 - L40x40x4-280	2

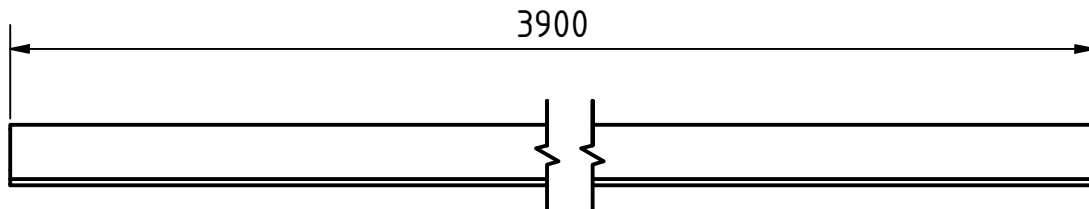
3.2-1 L-Profile 40x40x4x3900

Material: Steel

Projekt KUKATE34©

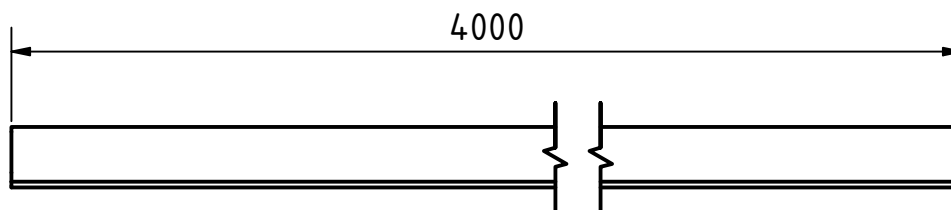
Titel 3.2 L-Profile

Änd.	Ausgabedatum	Spr.	Blatt
	18.07.2020	DE	1/2



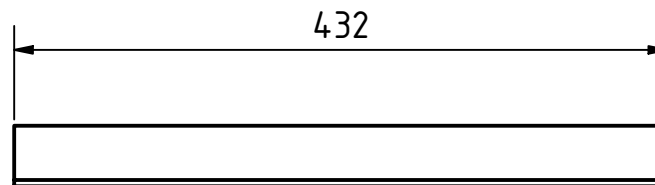
3.2-2 L-Profile 40x40x4x4000

Material: Steel



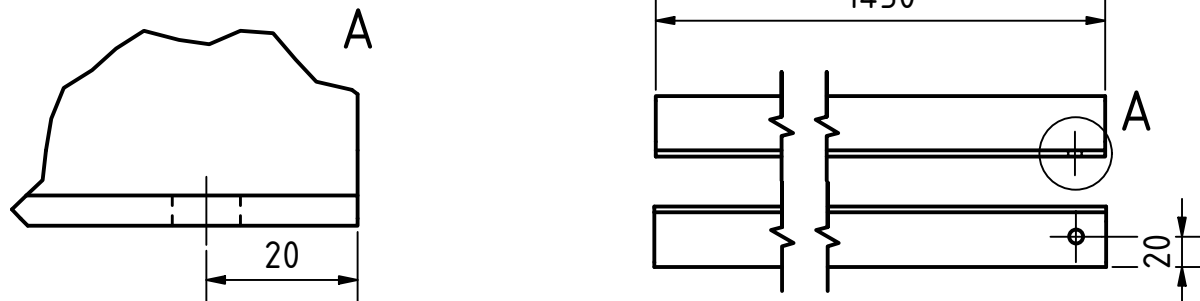
3.2-3 L-Profile 40x40x4x432

Material: Steel



3.2-4 L-Profile 40x40x4x1450

Material: Steel

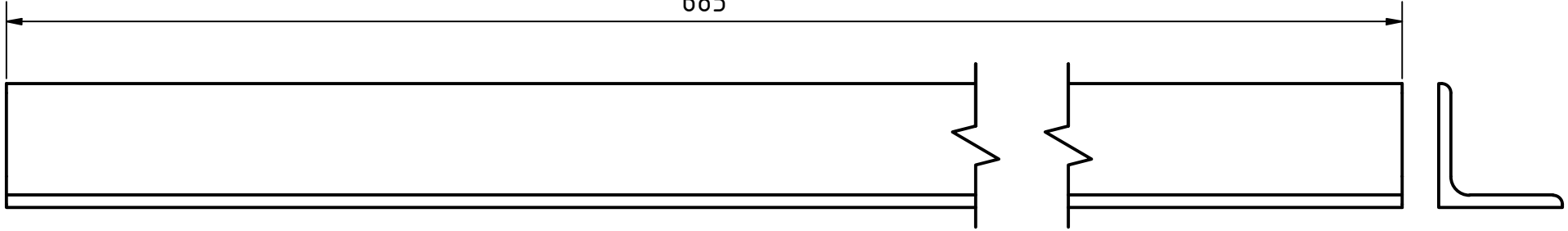


3.2-16 L-Profile 40x40x4x685

Project	KUKATE34©		
Titel	3.2 L-Profile		
Mod.	Release Date	Spr.	Page
	18.07.2020	ENG	2/2

Material: Steel

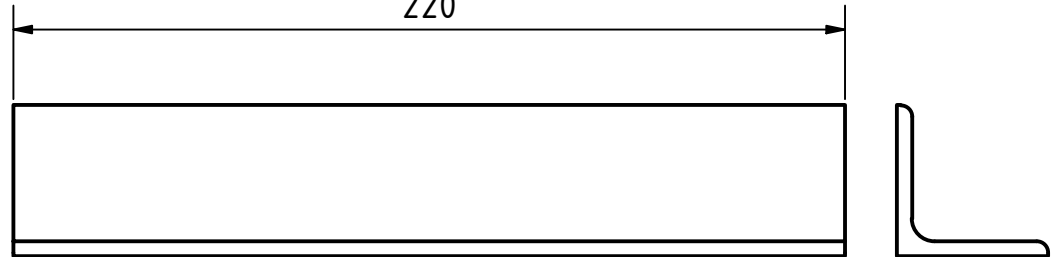
685



3.2-17 L-Profile 40x40x4x220

Material: Steel

220

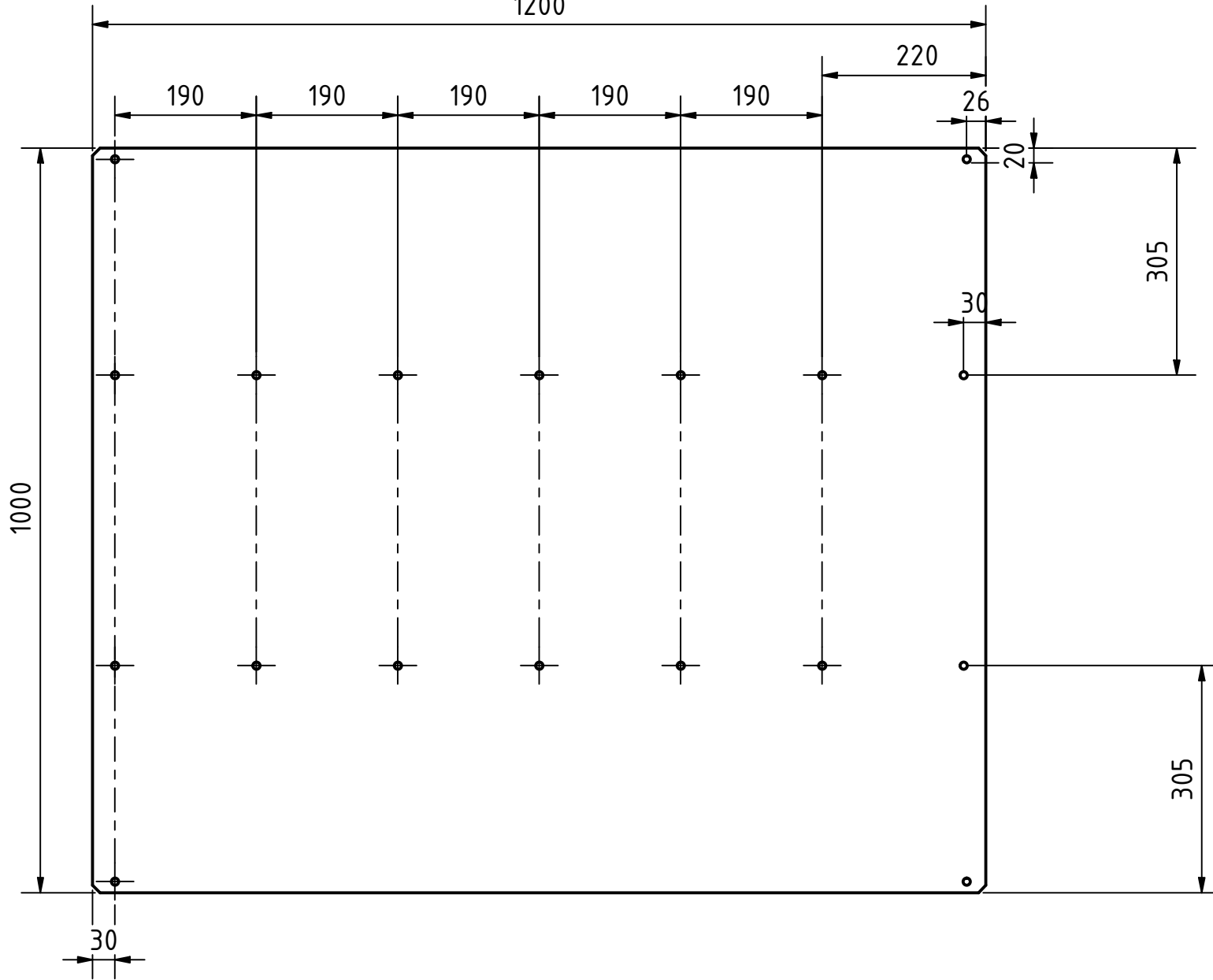


Project	KUKATE34©		
Titel	3.2-8 Sheet 1000x1200x2		
Mod.	Release Date	Spr.	Page
	29.11.2021	ENG	1/1

All holes drilled together with 3.2

1200

Material: Steel



3.2-18 Wood 25x40x685

Project	KUKATE34©		
Titel	3.2-18 Wood 25x40x685		
Mod.	Release Date	Spr.	Page
	19.07.2020	ENG	1/1

Material: Wood

